

SPECIAL  
ADVERTISING  
SUPPLEMENT

# Memphis

## Incomparable Reach

An outstanding variety of transportation options helps  
make Memphis **an ideal location for logistics operations.**



**It always pays to be well-connected, and you won't find better connections than the ones in Memphis. There may be no other city in North America that offers as many fast and effective ways to move freight to and from so many places.**

Transportation via the Four Rs – rail, runway, roads, and river – gives Memphis a tremendous reach. Most of the major East, West, and Gulf Coast ports, the contiguous U.S. states, Canada, Mexico, and all the world's major markets are reached

with an easy trip from Memphis, thanks to the dense transportation network that radiates from this prime logistics market.

With five Class I railroads, seven interstate and U.S. highways, one of the world's leading cargo airports, and the nation's

fourth-largest inland port, Memphis offers shippers an outstanding combination of efficiency and flexibility. Add the city's broad array of logistics services, and its abundant and reasonably priced warehouse space, and it's easy to see how Memphis earned its reputation as America's Distribution Center and America's Aerotropolis.

### **New Rail and Intermodal Investments**

Much of the big logistics news in Memphis these days has to do with its rail and intermodal infrastructure.

The third-largest U.S. rail center, Memphis offers service via Norfolk Southern (NS), BNSF Railway, Union Pacific (UP), CSX, and Canadian



Memphis' logistics success lies in its central U.S. location and wealth of transportation options. The Mississippi River, railroads, expedited air services, and highway network keep shippers connected to trading partners worldwide.

**"IF IT MOVES, IT CONNECTS IN MEMPHIS."**



**Memphis: America's Aerotropolis –**

a city where orders come in after dark and deliver the next morning at dawn. A three-shifts-a-day city where containers ship lean and finished goods ship out fast. Memphis can add competitiveness to your company by adding hours to your day.



**Memphis: America's Aerotropolis™**  
*Where Runway, Road, Rail & River Merge™*



**GREATER MEMPHIS CHAMBER**  
[www.memphischamber.com](http://www.memphischamber.com)



National (CN) Railway. Companies shipping from Memphis by rail can reach 45 U.S. states, Canada, or Mexico within two days. Rail carriers also tie Memphis to a wide variety of North American ports.

Memphis houses six fully operational railyards that offer the combined capacity to lift more than two million intermodal containers per year. And that capacity is growing as rail carriers continue to invest in Memphis.

In 2010, BNSF completed a \$200-million project to expand and rebuild its Memphis hub. This new Memphis Intermodal Facility doubled the railroad's lift capacity at the site to one million lifts per year. Equipment at the facility includes eight wide-span, electric, rail-mounted gantry cranes. Three of those are stacking cranes that move containers between trucks and stacks. The other five are production cranes used to load and unload trucks, and stack containers on railcars.

**Six railyards—including Norfolk Southern's new Memphis Regional Intermodal Facility—offer the combined capacity to lift more than two million intermodal containers per year.**

The site also features an automated gate system for moving trucks in and out with maximum efficiency. This new system has improved truck turn times from 60 minutes to about 25 minutes.

"Memphis is one of the nation's most strategic logistics hubs," says Steve Branscum, BNSF group vice president, consumer products. "BNSF's significant investment in this new facility not only makes it one of the most efficient and environmentally friendly intermodal facilities in the country, but also improves Memphis' position in the global supply chain by offering shippers more capacity and service options."

CN is also expanding, with plans to construct its new Memphis Logistics Park next door to the CN-CSX intermodal gateway in the Frank C. Pidgeon

Industrial Park. In early 2012, the Port of Memphis granted CN a 10-year option to purchase up to 800 acres in the park. The new facility will provide space for distribution centers that ship or receive intermodal freight.

### Expanding Capacity

In July 2012, NS opened the first section of its new Memphis Regional Intermodal Facility in Rossville. When complete, the \$105-million project will cover more than 400 acres and provide the capacity to handle more than 327,000 containers and trailers per year.

The facility, which is expected to create or enhance 6,200 jobs in the Memphis region over the next 10 years, is part of NS's \$2.5-billion Crescent Corridor project to develop a high-speed 2,500-mile intermodal rail line linking Memphis and New Orleans with New Jersey.

"The Memphis intermodal facility anchors Norfolk Southern's Crescent





# FASTEST **NATIONWIDE**

FedEx Freight® Priority has the fastest published transit times of any nationwide LTL service.

In a world that's always on fast-forward, your customers want instant satisfaction. That's why FedEx Freight moves your shipments fast. Then we go beyond fast with service features that keep your business up-to-the-second smart.

Accelerate your success. Ship fast — and smart — with FedEx Freight. Learn more at **[fedex.com/fastfreight](http://fedex.com/fastfreight)**.

**FedEx. Solutions That Matter.™**

All services are subject to terms and conditions provided in the FXF 100 Series Rules Tariff.

Corridor rail route, connecting the Northeast and Southeast with high-speed, reliable, truck-competitive intermodal services,” says Norfolk Southern CEO Wick Moorman.

The facility uses the latest in gate and terminal automation technology, which shortens the wait time for trucks entering the terminal, reducing exhaust emissions and improving truck driver productivity. Additionally, state-of-the-art, low-emission cranes will operate within the terminal, and the main administration building was built to Leadership in Energy and Environmental Design Certification standards.

These expansion projects, combined with Memphis’ position as a hub on so many major rail lines, make the city a superior distribution point, says Buzz Fly, vice president of Patterson Warehouses. The Memphis-based logistics services provider maintains five buildings in the city, with a total of 1.5 million square feet of warehouse space. Patterson specializes in import distribution and retail fulfillment,

## The Memphis–Panama Connection

The number of transportation options Memphis offers shippers will increase even further in 2014 with the reopening of the Panama Canal.

“Memphis as America’s Distribution Center will be enhanced further with the Panama Canal expansion, by adding a third coast for expedited inbound freight options,” says Neely Mallory III, president of Mallory Alexander International Logistics and chair of the Greater Memphis Chamber’s Regional Logistics Council. “These assets yield operating efficiencies for the city’s current and prospective businesses.”

The Regional Logistics Council focuses on promoting Memphis’ assets, including its geographic location and world-class infrastructure in all four transportation modes. It also works to enhance that infrastructure.

medical and food products, construction materials, and general commodities.

Memphis’ expanding capacity to handle intermodal containers provides a major advantage for shippers importing freight from Asia. Although Chicago is also served by five Class I railroads, that city is already so developed that there’s little room for rail carriers to enlarge their facilities there. “If you try to send freight to Chicago, it might get delayed waiting to

be unloaded from the trains,” Fly explains.

But Memphis still has a great deal of available land, and the ability to expand its infrastructure. “That gives the city a natural advantage,” he adds.

### Quadramodal City

Memphis’ rail and intermodal infrastructure are enough to make the city a prime business location, but it is the variety of transportation options that



**Memphis’ transportation connections would be meaningless without ample storage facilities. Patterson Warehouses maintains five locations in the area, offering a total of 1.5 million square feet of warehouse space for import distribution and retail fulfillment.**



Turn our expertise  
into your early advantage.

***Start your next project right, with conceptual  
site planning and supply chain design.***



For more than a century, Norfolk Southern's industrial development team has provided top-quality site selection assistance to companies with rail transportation needs. Our project managers, engineers, and logistics professionals have the in-depth knowledge and cutting-edge tools necessary to ensure you choose the optimal site for your next project. One of those optimal sites might be near our newly expanded Memphis Regional Intermodal Facility in Rossville, Tenn., which employs the latest in gate and terminal automation technology to shorten truck waiting times and boost productivity. The Memphis facility anchors Norfolk Southern's Crescent Corridor route, the shortest intermodal double-stack route from New Jersey to Louisiana.

Let's get started. Our team is ready to quickly provide informed site recommendations, conceptual site and track planning, and supply chain design, all in complete confidence. Rely on Norfolk Southern to give your next project an early advantage and outpace the competition.



Visit **NSindustrialdevelopment.com** or  
scan the QR code to learn more about what  
industrial development can do for you.

Call **404.529.1591** or  
email **newell.baker@nscorp.com**  
to start planning today.



**INDUSTRIAL DEVELOPMENT**



© 2012 Norfolk Southern Corp., Three Commercial Place, Norfolk, Va. 23510, [www.nscorp.com](http://www.nscorp.com), 855-NOR-FOLK



distinguishes it as a logistics powerhouse.

"Memphis is a 'quadrmodal' transportation hub," says Yossi Sheffi, Elisha Gray II professor of engineering systems at the Massachusetts Institute of Technology, and director of the MIT Center for Transportation and Logistics.

Sheffi devotes an entire chapter to Memphis in his new book, *Logistics Clusters: Delivering Value and Driving Growth*, a study of cities that have developed particularly dense concentrations of logistics facilities and services. According to the book, published by MIT Press in September 2012, these clusters are strong engines of economic activity and job creation.

"Memphis started to become a logistics cluster with the cotton trade," Sheffi notes. "Today, the city's logistics success lies with the presence of the railroads, FedEx's World Hub, the highway network, and the Mississippi River."

UPS, DHL, and the U.S. Postal Service also have major operations in Memphis.



More than 400 trucking companies and numerous logistics service providers operate in the city. A world-class cargo

**Memphis International Airport has been the busiest air cargo airport in North America for 19 years in a row, and currently ranks second in the world to Hong Kong.**

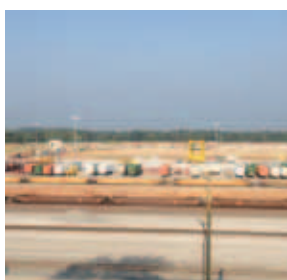
### NOW AVAILABLE

Land sites and build-to-suit

Gateway  
**Global** logistics  
center

**Marshall County, MS**  
1024 acres available  
\$45,000/acre  
Tier III county

**Fayette County, TN**  
475 acres available  
\$45,000/acre



- Rail sites available
- Adjacent to new Norfolk Southern Intermodal terminal
- Access via Highway 72 & Highway 302
- Approx. 2 miles from the future I-269 interchange at Goodman Road

RAIL TO ROAD ■■■■

**Tommy Jackson**  
Senior Vice President  
901.260.1178  
tommy.jackson@cbre.com

**Jim Mercer, SIOR**  
Executive Vice President  
901.260.1030  
james.mercer@cbre.com

**CBRE** | Memphis  
Part of the CBRE affiliate network

airport and one of the largest inland ports in the United States also help to extend Memphis' reach.

### Air Cargo Advantage

For some companies, the most compelling reason to locate in Memphis is a facility that occupies a sizeable portion of the Memphis International Airport: the FedEx World Hub, a transportation nerve center that processes more than 3.3 million packages every day, and connects shippers to more than 220 countries and territories on six continents.

Companies that locate close to FedEx in Memphis gain a big advantage: they can drop off packages for next-day delivery later than their counterparts in any other U.S. city.

"The cut-off is midnight Central Time," says Tom Kaden, vice president of warehousing and distribution at Mallory



We give every delivery the royal treatment.



The State Hermitage Museum, St. Petersburg

**Whether your freight is big and unwieldy or extremely delicate,** look to the leading specialist in global logistics and supply chain services to deliver impeccable care and attention with every job.

**confidence delivered.** on time. with care. everywhere.  
call 1.800.257.8464 or visit [mallorygroup.com](http://mallorygroup.com).

**MALLORY  
ALEXANDER**  
INTERNATIONAL LOGISTICS

Alexander, a Memphis-based firm whose services include customs brokerage, freight forwarding, warehousing, distribution, and transportation. Late cut-off is a boon for companies that use Mallory's distribution services.

"West Coast customers can take orders out of their inventory stock in Memphis until 10 p.m. Central time, and have them delivered the next day," Kaden notes.

Another group that benefits greatly from the FedEx factor in Memphis is consumers who order flowers from Mallory customer 1-800-Flowers. "During their key holiday periods, we ship 50,000 to 60,000 fresh bouquets to recipients all

## A central location in the continental United States and a mild climate make Memphis an attractive choice for air cargo.

over the United States," says Kaden.

Many procrastinating consumers have escaped embarrassment on Valentine's Day thanks to Mallory's employees and FedEx's late cut-off time in Memphis.

"We fill those orders up to midnight on Feb. 13, and FedEx sends them out to reach their destination on Valentine's Day," Kaden says.

Proximity to the World Hub also allows Medtronic, one of the world's largest manufacturers of medical devices, to fill orders from physicians who need items for surgery the next day, points out Larry Cox, president and CEO of the Memphis-Shelby County Airport Authority.

That access is key to the success of the massive Flextronics repair depot in Memphis. "The company ships laptop computers into Memphis, works on them overnight or the next day, then ships them out," says Cox.

In addition to the World Hub, FedEx's other Memphis operations include two FedEx Ground hubs, a FedEx SmartPost hub, and two FedEx Freight service centers. The city is also the world headquarters for FedEx Corporation, FedEx Express, FedEx Freight, FedEx Supply Chain Services, and FedEx Trade Networks.

### Attracting Air Freight

As big an influence as it wields, FedEx is far from the only factor making Memphis a magnet for companies that ship by air. Memphis International Airport has been the busiest air cargo airport in North America for 19 years in a row, and currently it is second in the world only to Hong Kong. In 2011, 3.9 million tons of air cargo passed through Memphis.

UPS operates a major sorting center on airport property, serving both its air and surface transportation operations. Five other all-cargo airlines provide niche services and flights to smaller cities.

"Memphis can serve any cargo need a shipper might have," says Cox.

Memphis International has four



Thanks to late cut-off times at Memphis' FedEx World Hub, 1-800-Flowers customers can order until midnight Central Time for next-day delivery.





## MEMPHIS PROUD

Beyond being one of America's best locations for warehousing and distribution, Memphis is a great city. That's why we are proud to have a presence in this vibrant community with our Memphis Intermodal Facility – a premier hub serving the supply chain needs of America and beyond.

[BNSF.COM](https://www.bnsf.com)



**BNSF**  
RAILWAY

runways and the newest, most efficient air traffic control tower in the country. A central location in the continental United States and a mild climate, with few weather interruptions, also make Memphis an attractive choice for air cargo.

To make air shipments to and from Memphis even more convenient,

Memphis International recently opened Cargo Central, featuring a dedicated cargo ramp to serve chartered cargo planes. "We can park 12 747-400s at one time," says Cox.

When Cargo Central's five-phase development is complete, it will offer 282,000 square feet of build-to-suit space for

warehousing and other activities for companies that need easy access to air cargo services.

Air transportation is so central to Memphis' economy that local officials have made the airport the centerpiece of an initiative to further develop the city's transportation infrastructure and

## Magnet for Manufacturers

While manufacturing is on the decline in much of the United States, Memphis has experienced a resurgence. In the past few years, at least eight manufacturers have made investments ranging from \$50 million to more than \$300 million in Memphis. They are: Blues City Brewing Company, Cargill, Electrolux, Kruger Products, Mitsubishi Chemical Corp., Mitsubishi Electric Power Products Inc. (MEPPI), Nucor Steel, and Riviana Foods.

Their investments include new locations in the city, expansions of existing operations, and consolidation of operations from several cities into Memphis. Montreal-based Kruger, for example, is spending \$316 million to upgrade its KTG USA facility in Memphis, which manufactures White Cloud bathroom and facial tissue.

Most of these companies have chosen to locate or expand in Memphis in part because of the multiple transportation options available there. For example, MEPPI's new facility for producing large power transformers is in the Rivergate Industrial Park, giving it immediate access to the rail lines and barges needed to transport

those immense products, as well as access to highways for smaller components. Electrolux's North American Cooking Products plant in the Frank C. Pidgeon Industrial Park enjoys the same sort of access to multiple transportation modes.

Other recent investment in Memphis includes:

- In January 2012, Nucor announced plans to expand production of specialty steel bar at its Memphis plant. Nucor has made \$350 million in capital investments in that facility since 2006, and in 2012 the company approved another \$113-million expansion in Memphis.

In 2011, the facility received shipments of scrap steel from more than 20 states. Fifty percent of that tonnage moved by rail, 34 percent by truck, and 16 percent by barge. The same year, Nucor shipped 60 percent of its finished product out of the facility by rail and 40 percent by truck.

- In 2010, Riviana Foods opened a new 400,000-square-foot manufacturing facility in Memphis, part of an expansion in the city

that started in 2006. The plant receives an average of 30 truckloads of rice per day, along with an average of nine truckloads of supplies such as corrugate, cartons, and CHEP pallets.

For outbound shipments of finished products, Riviana takes advantage of an array of transportation options. In 2012, it shipped an average of 76 loads per week by truck, 128 loads via intermodal, and six by boxcar. Buyers made their own

arrangement to pick up another 14 loads.

- Cargill has been conducting an \$82-million renovation and expansion of its corn mill on President's Island in Memphis. In 2011, Cargill received an average of 209 shipments of raw material per week via rail and seven via barge. In that same year, it shipped an average of 628 loads of finished goods by truck, 201 by intermodal, 162 by rail, and four by barge.

Manufacturing leaders understand that efficient transportation links and flexible options help drive the bottom line. The variety of rail lines, air routes, highways, and waterways stretching from the heart of Memphis to all corners of North America gives these companies the extended reach it takes to hit their goals.



**Appliance manufacturer Electrolux maintains its North American Cooking Products plant in Memphis' Frank C. Pidgeon Industrial Park.**





**WORLD'S BUSIEST  
AIR CARGO AIRPORT  
18 OF THE LAST 20 YEARS**



[www.memphisairport.org](http://www.memphisairport.org)

### On the Road

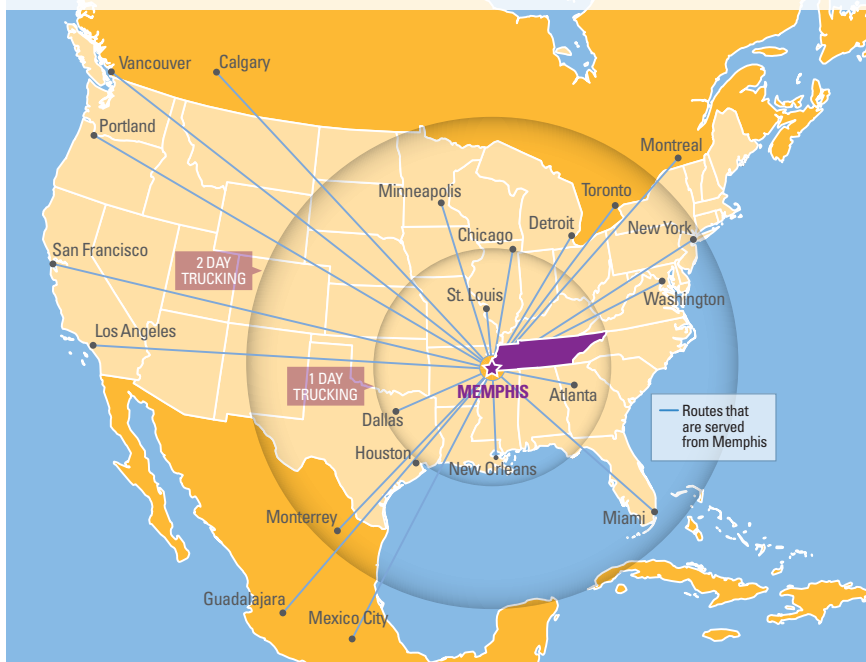
Truck shipments can reach more points next-day from Memphis than from any other U.S. city. And 70 percent of the U.S. population lives within a two-day drive from the city.

economy, basing their efforts on a concept called the aerotropolis – a thriving urban region with an airport at its heart.

#### Roads and Rivers

No matter how a company ships goods, at some point that freight will probably travel by truck. Memphis' central U.S. location, and access to several important highway corridors, make it one of the best spots in the country for truck transportation.

"You can reach more points next-day by truck than from any other city," says Fly. Those points include major markets such as Chicago, Atlanta, Dallas, Houston, St. Louis, and Kansas City. "And about 70 percent of the U.S. population is two days away by truck," he adds.



LIKE BBQ AND BLUES, BORN IN MEMPHIS,  
**DELIVERED WORLDWIDE.**

## DUNAVANT

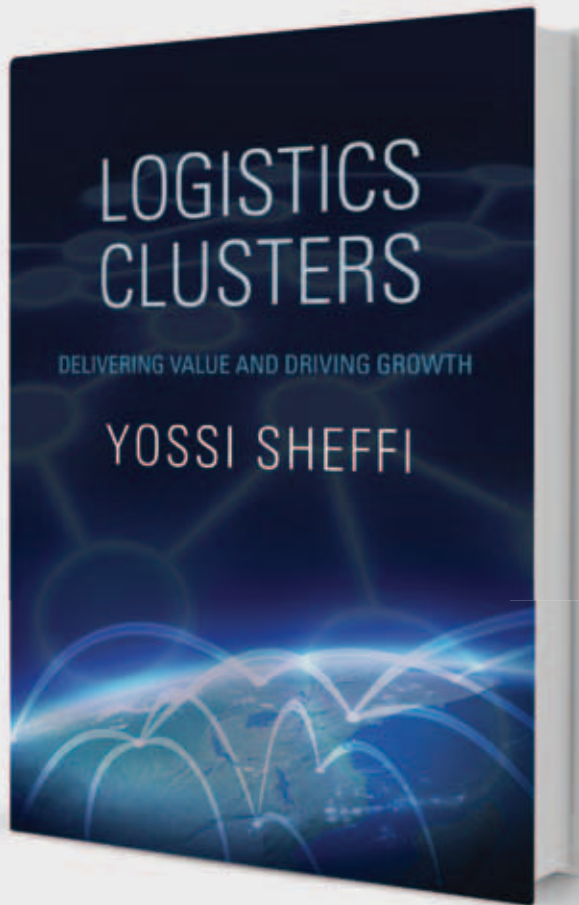
GLOBAL • FREIGHT • DISTRIBUTION • SOLUTIONS

- › Global NVOCC and Freight Forwarding
- › Customs
- › Global Supply Chain Design
- › Trade Finance
- › Container Drayage
- › Intermodal
- › LTL and Truckload Management
- › Air Forwarding

PROVIDING YOUR SINGLE SOURCE, LOGISTICS SOLUTIONS FOR DOMESTIC AND GLOBAL SUPPLY CHAINS.







"Yossi Sheffi succinctly summarizes the major current developments in worldwide logistics in this well written book."

— FREDERICK W. SMITH,  
CHAIRMAN & CEO,  
FEDEX CORPORATION

Helping to speed product to and from those population centers are several interstate highways that converge in Memphis. Running through the center of the city is I-40, a coast-to-coast route across the United States. The stretch of I-40 from Memphis to Little Rock, Ark., is the nation's third-busiest trucking corridor.

I-55 puts Memphis on a major midwestern route that includes New Orleans, St. Louis, and Chicago. The city also stands at the midway point of the NAFTA Highway, a new corridor built on I-69 that, when complete, will run from Montreal to the

Texas-Mexico border. And Memphis is the starting point of the future I-22, which will provide a direct connection to Birmingham and Atlanta.

### The Fourth R

The fourth R, the Mississippi River, has been vital to Memphis' economy since the city's founding in 1827. Today, the Port of Memphis is the fourth-largest inland U.S. port, and the second-largest inland port on the shallow draft portion of the Mississippi. It handles more than 16 million tons of cargo per year by barge, and

U.S. Customs collects more import duties there than from most major U.S. seaports.

The top commodities handled at the Port of Memphis are petroleum, coal, food and agricultural products, crude material, and chemicals and related products. Nearly 200 companies have facilities at the port, in the Frank C. Pidgeon Industrial Park or in the President's Island complex. Among those companies is the only petroleum refinery in Tennessee, operated by oil refiner Valero.

No matter which modes or transportation lanes a company builds into its

## Room to Grow

When it comes to finding available space for manufacturing and distribution facilities, businesses have plenty of choices in Memphis—and more could be on the way, due to more than 1.5 million square feet of positive absorption in third quarter 2012.

"Currently, availability exists in Class A, B, and C properties in the greater Memphis area," says Jim Mercer, executive vice president at commercial real estate services firm CB Richard Ellis Memphis LLC, an affiliate of CBRE Group Inc., headquartered in Los Angeles. "Seven available buildings are 400,000 square feet and larger, but only four are Class A properties—and leasing of Class A space continues to be the dominant trend in the Memphis market."

Generally, Class A properties are newer, and feature ceiling heights of 28 to 30 feet; Early Suppression, Fast Response sprinkler systems; and truck courts of at least 135 feet. Companies seeking spaces between 100,000 and 400,000 square feet can choose from 53 available facilities in Memphis, 12 of which are Class A properties.

To meet demand for larger, Class A properties, speculative facility construction is occurring in Memphis for the first time since 2008. Real estate developer Industrial Developments International is building two speculative facilities, available by the end of 2012.

One property offers 869,000 square feet of space, while the other is 267,000 square feet—of which 150,000 square feet is already pre-leased. Three other developers

are evaluating speculative construction, as well.

The majority of these properties are, or will be, located in industrial parks with easy access to the interstate system, Memphis International Airport, the FedEx World Hub, and railroad intermodal yards.

Shippers are taking full advantage of all the logistics benefits Memphis has to offer. "One medical supply company recently relocated a large distribution operation to Memphis to be closer to its markets and take advantage of the lower logistics costs provided by the four major transportation modes existing in the city," notes Mercer.



**Several industrial parks in Memphis offer convenient access to the interstate system, Memphis International Airport, the FedEx World Hub, and railroad intermodal yards.**





*Centered in Memphis, the Hub of Transportation*




Helping our clients manage and control all aspects of their supply chains - physical, informational and financial within one global database, our solutions include:

- Transportation Management Systems
- Freight Bill Audit & Payment
- Business Intelligence
- Global Consulting



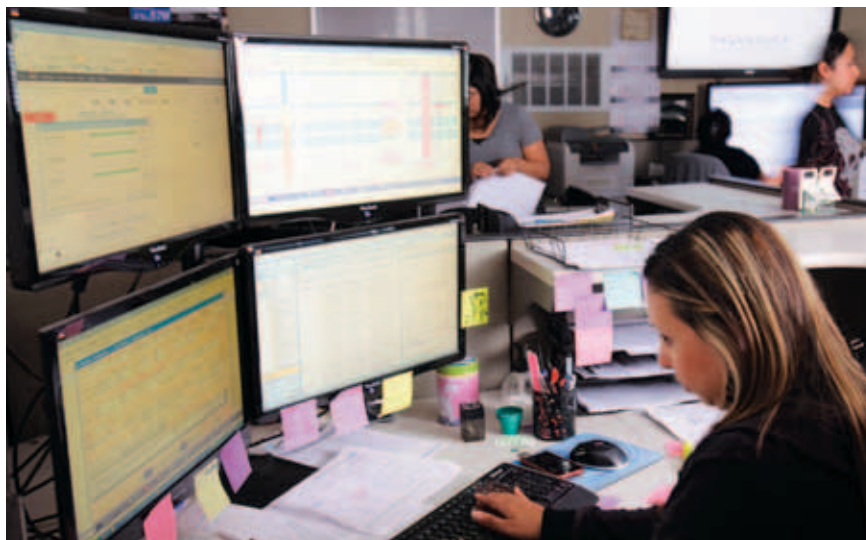
**Call today for a Demo!**

1-888-836-5135  [www.ctsi-global.com](http://www.ctsi-global.com)

strategy, developing a backup plan is always wise. Memphis offers an advantage that's key to contingency planning—the ability to easily substitute one good transportation choice for another.

“Memphis has flexibility because it serves almost every port in the United States and Canada with a single rail connection,” says Dexter Muller, senior vice president, community development at the Greater Memphis Chamber. Companies importing goods through the Port of Los Angeles-Long Beach, for instance, can easily move to Canada's Port of Prince Rupert, or through the Panama Canal to ports such as Mobile, Jacksonville, Savannah, or Halifax should conditions make one of those locations a better option.

“Any number of factors could cause supply chain disruption,” says Jim Apple, senior vice president, business development at Raymond James and chair of the marketing council of the Greater Memphis Chamber's Regional Logistics Council. “Memphis offers shippers the greatest flexibility.”



**Memphis-based logistics and transportation company Dunavant assists shippers in finding alternate routes or modes when supply chain disruptions occur.**

Whether there's an impending port strike, a weather disaster, or another condition that forces a change in transport plans, Memphis provides many opportunities for rethinking routes or switching modes.

Richard McDuffie, chief operating

officer of Memphis-based logistics and transportation company Dunavant, cites the example of grain shipments that normally travel by barge from Memphis to New Orleans. The recent drought has caused problems for that route.

## Reducing the Carbon Footprint

Many companies these days are working hard to reduce their carbon footprints. Consumers want to support companies that demonstrate concern for the environment. And when large corporations evaluate potential suppliers, one measure they often apply is how effectively the company is working to minimize its carbon emissions.

“Transportation can contribute 25 to 50 percent toward a company's carbon footprint—or even more, in certain businesses,” says Dexter Muller, senior vice president, community development at the Greater Memphis Chamber.

With its numerous transportation options, Memphis represents an excellent location for companies that are serious about reducing fuel consumption and its impact on the environment.

“Barge transportation releases less carbon into the atmosphere than other transport modes,” says Muller. “The second-best option is rail, and Memphis has an edge over most cities in both modes.”

Although trucking requires more fuel per unit of freight than rail or water transportation, most freight travels over the road at least part of the way. For many loads, time constraints or cost factors make truck transportation the optimal choice. But even in this case, a location in Memphis offers an environmental advantage. “Truck trips from Memphis are shorter, and therefore use less fuel, because the city is closer to more metropolitan markets than most other cities,” Muller says.



**Transporting shipments via barge on the Mississippi River cuts carbon emissions.**



"The Mississippi River is currently at its lowest point in years," McDuffie says. "Dunavant is actively exploring all opportunities to help manage products impacted by the drought."

Some bulk shippers in Memphis make tradeoffs between different modes as a matter of course. "Depending on where shipments are going and what the rates are, bulk shippers use more rail or river transport," says Sheffi. "They can switch between them to get the optimal combination of cost and service for movement in and out of a plant."

Memphis' multimodal character benefits all kinds of shippers, says McDuffie, whose company serves customers in the agriculture, automotive, food, retail, and chemical industries, among others.

"Depending on the product's required lead time, Memphis offers multimodal and multi-carrier options that allow shipping by barge, rail, intermodal, truckload, less-than-truckload, or air," he says.

"If businesses have critical shipments with late-night cut-offs that must arrive the next morning, the FedEx main hub or UPS are both options," McDuffie continues. "Being in Memphis allows shippers to pick the best service and price relationship to serve their own needs, or serve their customers."

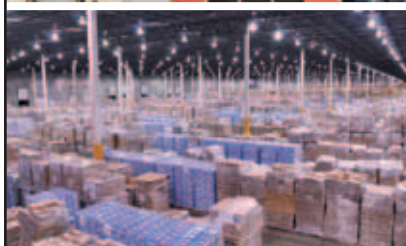
The ability to switch modes is especially important in the current era of high fuel prices, says J. Kenneth Hazen, president and CEO of CTSI-Global, a Memphis-based provider of transportation management systems and other logistics

technology. Memphis' multiple options might pose an even greater advantage as the graying of the truck driving population exacerbates the capacity shortage.

"The average truck driver age today is 56 years old," Hazen says. "A lot of strategic planning is happening. What will companies do in 10 years, when all the Baby Boomers are retired? They need a backup option."

With its well-connected transportation network, Memphis offers backups in abundance – and an incomparable reach to U.S. locations and beyond. ■

**For information on featuring your region in an Economic Development Supplement, contact James O. Armstrong at 314-984-9007 or [jim@inboundlogistics.com](mailto:jim@inboundlogistics.com).**



## Stop Shopping and Start Shipping.

***Need improved capabilities to eliminate expensive compliance charge backs?***

Start shipping using our full suite of service options and WMS features.

***Need help in the battle to reduce transportation costs?***

Start shipping and take advantage of Memphis' central location (1 – 2 day delivery to over 70% of the U.S. population) and our dollar-saving LTL consolidation programs.

***Need better inventory management to reduce back orders and lost sales?***

Start shipping with a 3PL you can trust to treat your inventory just like their own.

### **Patterson Warehouses**

5388 Airways Blvd.  
Memphis, TN 38119  
[www.PattersonWarehouses.com](http://www.PattersonWarehouses.com)

### **For more information,**

call us at 901.344.2600 or email  
Buzz Fly, [flyhar@patwar.com](mailto:flyhar@patwar.com) or  
Paul McDaniel, [paulmc@patwar.com](mailto:paulmc@patwar.com)





## **BNSF Railway Company • [www.bnsf.com](http://www.bnsf.com)**

BNSF Railway is one of North America's leading freight transportation companies, with a rail network of 32,000 route miles in 28 states and two Canadian provinces. BNSF is one of the top transporters of the products and materials that help feed, clothe, supply, and power communities throughout America and the world. BNSF moves those goods more safely and efficiently, on significantly less fuel, and with fewer emissions than the all-highway alternative.

## **CBRE Memphis • [www.cbre.us](http://www.cbre.us)**

CBRE is the world's premier, full-service real estate services company. Operating globally, the firm holds a leadership position in virtually all of the world's key business centers.

Whether it's a local, regional, national, or global assignment, CBRE applies insight, experience, intelligence, and resources to help clients make informed business decisions.

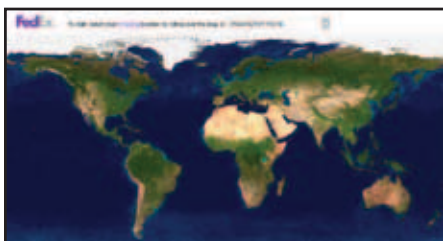


## **CTSI-Global • [www.ctsi-global.com](http://www.ctsi-global.com)**

For more than 50 years, CTSI has been a valuable resource to companies by providing the technology and industry expertise to help them manage all aspects of their supply chain – physical, informational, and financial – through freight audit and payment, transportation management systems (TMS), information management tools, and global consulting. The end results are improved shipping efficiencies, greater control, and significant ongoing savings. CTSI is your link to supply chain solutions.

## **Dunavant • [www.dunavant.com](http://www.dunavant.com)**

With more than 50 years of experience in logistics and supply chain innovation, Dunavant Enterprises has the knowledge to ensure your company's logistics practices are efficient and effective while providing a customized approach for your business. Driven by superior customer service and a dedication to the proper use of the most advanced technology, Dunavant is leading the way into the future of logistics.



## **FedEx Freight • [www.fedex.com](http://www.fedex.com)**

Your shipping needs are as individual as your business. That's why FedEx Freight offers value-added and specialized options. So, whether you need your LTL shipments delivered by a specific time or date, you plan to flex your international know-how by taking your business across the border, or you need help shouldering your large-volume shipments, count on FedEx Freight to take care of your LTL freight.

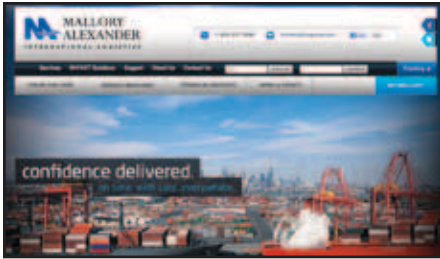
## **Memphis Regional Chamber • [www.memphischamber.com](http://www.memphischamber.com)**

More and more companies are doing business in Memphis, for good reason. If you or your organization are looking to expand your operations, relocate to a business-friendly community, or take advantage of the economy of scale that Memphis' logistics infrastructure can provide, contact the Memphis Regional Chamber, the economic development agency for the mid-South region. For all the details, visit the Memphis Regional Chamber's Web site.





# The Best of Memphis on the Web



## **Mallory Alexander International Logistics • [www.mallorygroup.com](http://www.mallorygroup.com)**

Mallory Alexander International Logistics is a leading third-party logistics provider. As a specialist in global logistics and supply chain services, Mallory Alexander acts as a single source for all logistics and supply chain needs. Specifically, Mallory Alexander provides public and contract warehousing, freight forwarding (international, domestic, air, and ocean), customs brokerage, import/export services, intermodal trucking and transportation, logistics services, and consulting.

## **Memphis International Airport • [www.memphisairport.org](http://www.memphisairport.org)**

Memphis International Airport is the only airport in North America considered to be an “aerotropolis” – an airport-integrated region extending outward from the airport in strings and clusters of airport-linked businesses and their associate residential complexes.

Memphis International Airport and the concept of America’s Aerotropolis are at the forefront of the Memphis Fast Forward initiative that has been launched by a partnership of Memphis Tomorrow, the Greater Memphis Chamber, and both the City of Memphis and Shelby County.

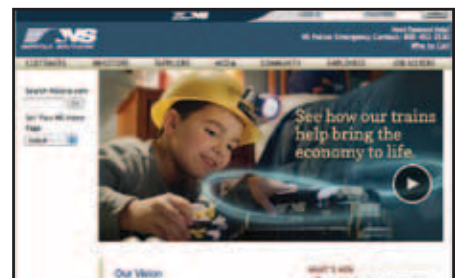


## **MIT Press • [www.mitpress.mit.edu](http://www.mitpress.mit.edu)**

Why is Memphis home to hundreds of motor carrier terminals and distribution centers? Why does the tiny island-nation of Singapore handle one-fifth of the world’s maritime containers and half the world’s annual supply of crude oil? Which jobs can replace lost manufacturing jobs in advanced economies? Some answers to these questions are rooted in the phenomenon of logistics clusters – geographically concentrated sets of logistics-related business activities. In his new book, *Logistics Clusters*, published by MIT Press, supply chain management expert Yossi Sheffi explains why Memphis, Singapore, Chicago, Rotterdam, Los Angeles, and scores of other locations have been successful in developing such clusters, while others have not.

## **Norfolk Southern • [www.nscorp.com](http://www.nscorp.com)**

Norfolk Southern Corporation is one of the nation’s premier transportation companies. Its Norfolk Southern Railway subsidiary operates approximately 21,000 route miles in 22 states and the District of Columbia, serves every major container port in the eastern United States, and provides superior connections to western rail carriers. Norfolk Southern operates the most extensive intermodal network in the East and is North America’s largest rail carrier of metals and automotive products.



## **Patterson Warehouses, Inc. • [www.patwar.com](http://www.patwar.com)**

Patterson Warehouses, Inc. is one of the largest third-party logistics providers in the Memphis area, operating more than two million square feet of food grade space. Whether it is import-to-retail, medical supplies, or raw materials for manufacturing, Patterson can meet your ever-changing distribution needs. Let Patterson ensure your success by becoming your distribution partner in Memphis.